

vax®

FlipOut Pet CORDLESS HAND VAC

**POWER & VERSATILITY
FOR ON-THE-GO CLEANING**



LET'S GET STARTED.

2 YEAR WARRANTY

VX84

Let's talk safety



Basic safety precautions

This vacuum cleaner is intended for household use only and NOT for commercial or industrial use.

READ ALL THE INSTRUCTIONS BEFORE USING THIS APPLIANCE

- It is a battery-operated appliance, the battery being charged inside the appliance.
- Only use the vacuum cleaner indoors and keep the area you're cleaning well lit.
- Keep fingers, hair and loose clothing from moving parts and openings whilst using the vacuum cleaner.
- This appliance is not intended for use by persons (including children) with reduced physical, sensory or mental capabilities or lack of experience and knowledge unless they have been given supervision or instruction concerning use of the appliance by a person responsible for their safety. Children should

not play with the vacuum cleaner. Cleaning and user maintenance should not be made by children without supervision

- Only Vax recommend tools and accessories should be used with this vacuum cleaner
- Keep the charger and vacuum cleaner in a dry place, and use them indoors only.
- Do not use charger with damaged cord or plug. If appliance or charger is not working as it should, has been dropped, damaged, left outdoors or dropped into water, take it to a Vax authorised repair agent prior to continuing use. Please contact our Customer Care Line on: AU: 1300 829 287 / NZ: 1300 829 695 (Mon-Fri 8.30am to 5.00pm) or visit www.vax.com.au / vax.co.nz for your nearest Vax authorised repair agent.

Please keep instructions for further use.



Do's

- ž Use only as described in this manual. Use only manufacturer's recommended attachments.
- ž Keep hair, loose clothing, fingers, and all parts of body away from openings and moving parts.
- ž Use extra care when cleaning on stairs.
- ž Only use the charger supplied to charge the unit
- ž Turn power switch off before removing or installing powered nozzle.
- ž The charger is for indoor use only. Be sure to always keep the battery and charger in a dry place.
- ž Put product away after use to prevent tripping accidents.
- ž Unplug the charger from the outlet before any routine cleaning or maintenance.



Don'ts

- \\ Do not use the unit, store, or charge battery outdoors or on wet surfaces. Do not allow to get wet.
- \\ Do not allow to be used as a toy. Not intended for use by children age 12 and under. Close supervision is necessary when used by or near children. To avoid injury or damage, keep children away from product, and do not allow children to place fingers or other objects into any openings.
- \\ Do not use charger with damaged cord or plug. If appliance or charger is not working as it should, has been dropped, damaged, left outdoors, or dropped into water, take it to a service centre prior to continuing use.
- \\ Do not pull or carry charger by cord, use cord as handle, close a door on cord, or pull cord around sharp edges or corners. Do not place product on cord. Do not run appliance over cord. Keep cord away from heated surfaces.
- \\ Do not unplug charger by pulling on cord. To unplug charger, grasp the plug, not the cord.
- \\ Do not handle charger, including charger plug, and charger terminals with wet hands.
- \\ Do not put any objects into openings. Do not use with any opening blocked; keep free of dust, lint, hair, and anything that may reduce air flow.
- \\ Do not use to pick up flammable or combustible liquids, such as gasoline, or use in areas where they may be present.
- \\ Do not pick up anything that is burning or smoking, such as cigarettes, matches, or hot ashes.
- \\ Do not use without filters and/or dirt cup in place.
- \\ Do not incinerate the charger, battery, or appliance even if it is severely damaged. The batteries can explode in a fire.
- \\ This product includes rechargeable lithium-ion batteries. Do not expose batteries to high temperatures, as they may catch fire and/or explode.
- \\ Do not expose battery to crushing, incineration or similar actions.
- \\ Do not attempt to disassemble battery.
- \\ Do not attempt to short circuit the battery or charger terminals.
- \\ Do not place cleaner on stairs or furniture, as it may result in injury or damage.
- \\ Do not use chargers that are not designed for this unit
- \\ CAUTION: Not to be used for grooming a pet.

BATTERY WARNING

- \\ Do not incinerate the battery even if it is severely damaged. The batteries can explode in a fire.
- \\ Do not expose batteries to high temperatures, as they may catch fire and/or explode.
- \\ Do not expose battery to crushing, incineration or similar actions.
- \\ Do not dispose of battery in a fire or trash compactor.
- \\ Do not attempt to disassemble battery.
- \\ Leaks from battery cells can occur under extreme conditions. If any liquid gets on the skin wash quickly with soap and water. If any liquid gets into the eyes, do not rub eyes, immediately flush them with clean water continuously for a minimum of 15 minutes. Seek medical attention immediately.
- \\ Do not attempt to short circuit the battery or charger terminals.

Thank you for buying this FlipOut Pet.

Taking care of small cleaning tasks

The FlipOut Pet Handheld is designed to make cleaning as quick and convenient as possible and this user guide will help you get the most out of your machine. The FlipOut Pet is perfect for small cleaning tasks on surfaces and upholstery.

Taking care of your FlipOut Pet Handheld

Also inside this guide are instructions on maintaining your new machine, so that it's always ready when you need to tackle those small jobs.

We're here if you need us

The Vax logo is displayed in a bold, orange, sans-serif font. The letters 'v' and 'a' are lowercase, while 'x' is uppercase. A registered trademark symbol (®) is located at the top right of the 'x'.

For troubleshooting simply visit or call:

Australia: 1300 829 287*

vax.com.au

New Zealand: 1300 829 695*

vax.co.nz

*Monday – Friday: 8:30am -5:00pm

Calls are charged at the standard local rate. Please make note of the serial number and model number of the product before calling.

Let's talk safety

Getting to know your machine

Getting started

Using your machine

Taking care of your machine

Notes

What to do if it goes wrong

Getting in touch

FlipOut Pet

Included with your machine



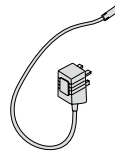
Powered turbo tool



Dusting brush



Flip Out Crevice Tool



Charger

Getting to know your machine



Technical Specification

Name **FlipOut Pet**
Model No **VX84**
Voltage **16V DC Li-ion**
Wattage **100W**
Weight **1.5kg**

Charger Specification

Charger Model No **YLJXA-A182030**
Charger Input **100-240V-50/60Hz**
Charger Output **18.2V 300mA**

Accessories & Consumables

Pre-motor filter
Model No **VX47F**



To purchase consumables and accessories, please visit vax.com.au/vax.co.nz

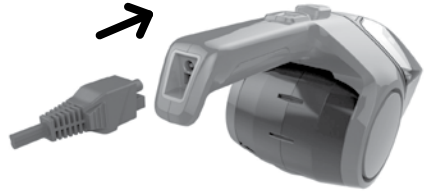
Subject to technical change without notice. Images are illustrative only.

PLEASE READ 'LET'S TALK SAFETY' AT THE BEGINNING BEFORE USE

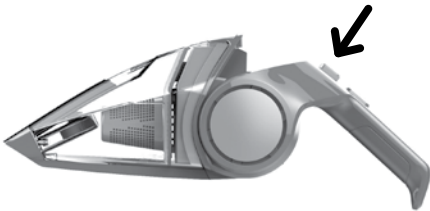
Assembling your vacuum cleaner



Remove from carton & Review the instruction manual.



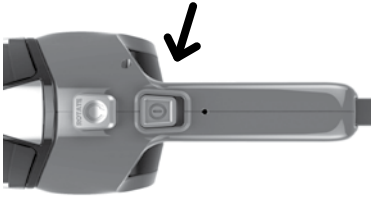
Plug in & Charge unit until the charge indicator light goes out (Charging may take up to 6 hours).



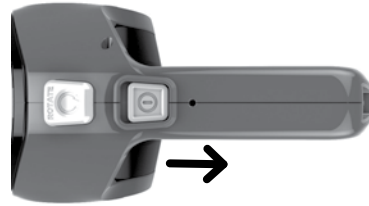
Press the handle release button to pivot handle for easy cleaning.

Using your machine

Turning your machine On and Off



Slide the power switch to the ON position.

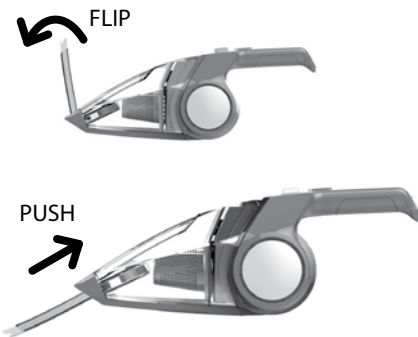


When completed, slide the power switch to the OFF position.

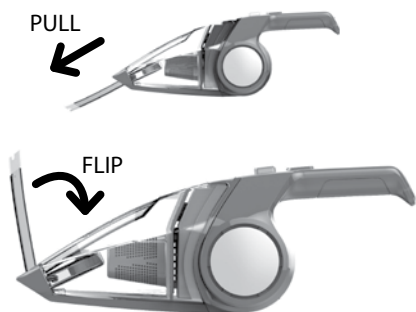
NOTE: Empty and clean the unit and filter after each use or after large pickups when the unit becomes full.

TIP: The power switch must be in the OFF position for the unit to charge.

Quick-flip crevice tool



Flip crevice tool out to line up with nozzle then push in until secured in place.



To store crevice tool: gently pull the tool away from the dust cup and flip the tool up towards the unit & press down until you feel it lock into place.

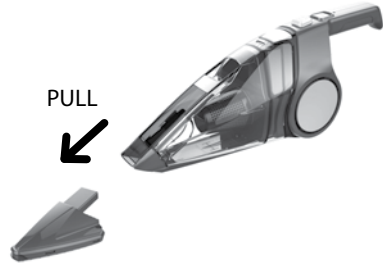
Using your machine

Dusting tool



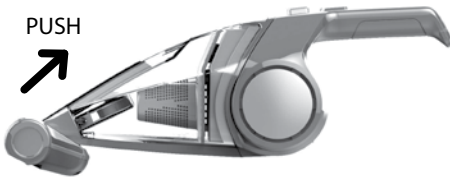
Push accessory brush into hand vac nozzle to attach.

TIP: Crevice tool can not be extended.



To remove dusting tool, gently pull tool away from hand vac.

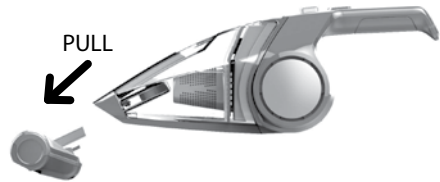
Powered turbo tool



Push powered turbo tool into hand vac nozzle to attach.

NOTE: When unit is on, the powered turbo tool will be on.

TIP: Crevice tool can not be extended.



To remove power nozzle, gently pull tool away from the hand vac.

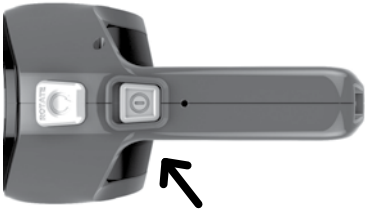
NOTE: The powered turbo tool has its own motor and a motor protective device; should debris jam the turbo tool and stop it from rotating, switch the unit OFF, remove the powered turbo tool from the unit, remove the debris jamming the turbo tool and assemble the powered turbo tool attachment back on the unit. Then wait a few minutes prior to turning the unit ON again.

Using your machine

Charging

NOTE: Use only the charger supplied by the manufacturer to recharge.

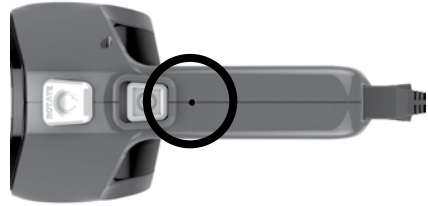
TIP: For a better experience, fully charge the unit before first use.



Power switch must be in the OFF position.

NOTE: The unit can only charge when the switch is in the OFF position.

NOTE: If the unit is running and the charger plug is connected to the unit, the unit will shut off to prevent damage to the charger or unit.



The charge indicator light will pulse when charging and the indicator will turn off when charging is complete.

NOTE: The charge indicator will only turn on while charging. Once the battery is fully charged, the indicator will not go on again. The charger will be warm while charging.

TIP: The unit will charge only for as long as needed. It may take up to 6 hours for full charge.

Using your machine

Handle pivot



Position 1 - Easy cleaning for upholstery, stairs and crevices.



Position 2 - Easy cleaning for higher surfaces.



Position 3 - Great for cleaning shelves, cabinets and more.



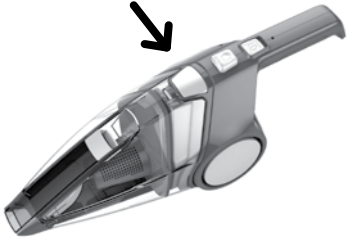
Position 4 - Compact storage.

Taking care of your machine

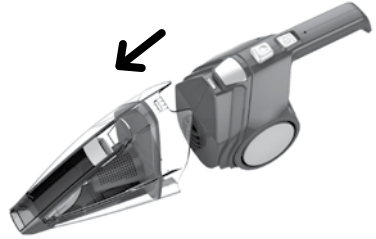
Filter removal and replacement

TIP: To maintain performance, filter should be changed every 3-6 months, or as needed.

WARNING: To reduce the risk of personal injury, turn power switch off before cleaning or servicing.



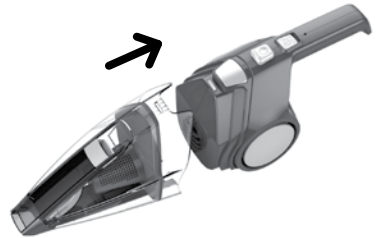
While holding the dirt cup and handle, press dirt cup release button.



Remove the dirt cup to access filter.



Remove filter assembly from dirt cup & separate the white filter from the filter housing. Tap filter over a trash can to remove debris. Be sure to also wipe debris from the filter housing.



Place filter back into the filter housing. Place dirt cup back onto the body of the hand vac until you hear it click.

NOTE: Do not discard filter or filter housing.

NOTE: Filter is rinseable with water. Do not use soap/detergent. Must be completely dry before use.

NOTE: For replacement filter VX47F visit vax.com.au / vax.co.nz or call us at AU: 1300 829 287 / NZ: 1300 829 695.



What to do if it goes wrong

Problem

Solution

Cleaner won't run

- Battery not charged – Charge battery up to 6 hours. The indicator light will pulse until the battery is fully charged and then will turn off.
- Battery dead - won't hold charge – Contact customer service. Visit our website at www.vax.com.au / www.vax.co.nz or call AU 1300 361 505 / NZ 0800 800 900.
- Needs service – Contact customer service. Visit our website at www.vax.com.au / www.vax.co.nz or call AU 1300 829 287 / NZ: 1300 829 695.

Cleaner won't pick up or low suction

- Dirt Cup not installed correctly – Review Filter Removal & Replacement.
- Dirt Cup is full – Empty dirt cup.
- Battery charge is getting weak – Charge battery.
- Filter is dirty – Clean or replace filter.
- Clogged filter – Remove filter and clean.
- Nozzle/dirt passage clogged – Turn off the unit and then disconnect the nozzle to remove debris.
- Filter/Filter Frame missing – Contact customer service. Visit our website at www.vax.com.au / www.vax.co.nz or call AU 1300 829 287 / NZ: 1300 829 695.

Dust escaping from cleaner

- Dirt cup is full – Turn off unit and remove debris.
- Dirt cup not installed correctly – Review Filter Removal & Replacement.
- Filter not installed correctly – Review Filter Removal & Replacement.

Charger indicator flashes then goes out

- Problem with the charging circuit – Contact customer service. Visit our website at www.vax.com.au / www.vax.co.nz or call AU 1300 829 287 / NZ: 1300 829 695.

Taking care of you

2 YEAR WARRANTY

We're here if you need us. For trouble shooting, simply call or visit:

Australia: 1300 829 287*

vax.com.au

New Zealand: 1300 829 695*

vax.co.nz

*Monday-Friday 8.30am to 5.00pm



Distributed by

Techtronic Industries Australia Pty Ltd

31 Gilby Road, Mount Waverley, VIC 3149, Melbourne, Australia
Careline AU: 1300 VAX AUS (1300 829 287) www.vax.com.au

Techtronic Industries N.Z. Limited

2 Landing Drive, Mangere, Auckland, 2022, New Zealand
Careline NZ: 0800 VAX NZL (0800 829 695) www.vax.co.nz