

vax

CORDLESS
Blade
PET PRO SLIMVAC

**CORDLESS SLIMVAC WITH
DETACHABLE HANDHELD**

LET'S GET STARTED.

VX63





Basic safety precautions

This vacuum cleaner is intended for household use only and NOT for commercial or industrial use.

READ ALL THE INSTRUCTIONS BEFORE USING THIS APPLIANCE

- It is a battery-operated appliance, the battery being charged whilst inside the appliance.
- Only use the vacuum cleaner indoors and keep the area you're cleaning well lit.
- Keep fingers, hair and loose clothing from moving parts and openings whilst using the vacuum cleaner.
- This appliance is not intended for use by persons (including children) with reduced physical, sensory or mental capabilities or lack of experience and knowledge unless they have been given supervision or instruction concerning use of the appliance by a person responsible for their safety. Children should not play with the vacuum cleaner. Cleaning and user maintenance should not be made by children
- Only Vax recommended tools and accessories should be used with this vacuum cleaner
- This vacuum cleaner does not stay upright without constant support, in between uses lie flat on the floor in a suitable location so it does not become a trip hazard or can be stepped on.
- Keep the charger and batteries in a dry place, and use them indoors only.
- Do not use charger with damaged cord or plug. If appliance or charger is not working as it should, has been dropped, damaged, left outdoors or dropped into water, take it to a Vax authorised repair agent prior to continuing use. Please contact our Customer Care Line on: AU: 1300 361 505 / NZ: 0800 800 900 (Mon-Fri 8.30am to 5.00pm) or visit www.vax.com.au / vax.co.nz for your nearest Vax authorised repair agent.

Please keep instructions for further use.

Battery Safety Precautions:

- Do not place vacuum or batteries near fire or heat. This will reduce the risk of explosion and possible injury.
- Do not crush, drop or damage battery pack. Do not use a battery pack or charger that has been dropped or received a sharp blow. A damaged battery is subject to explosion. Properly dispose of a dropped or damaged battery immediately.
- Batteries can explode in the presence of a source of ignition, such as a pilot light. To reduce the risk of serious personal injury, never use any cordless product in the presence of open flame. An exploded battery can propel debris and chemicals. If exposed, flush with water immediately.
- Do not charge vacuum in a damp or wet location. Following this rule will reduce the risk of electric shock.

- For best results, charge the battery tool in a location where the temperature is more than 10°C but less than 37°C. To reduce the risk of serious personal injury, do not store outside or in vehicles.
- Under extreme usage or temperature conditions, battery leakage may occur. If liquid comes in contact with the skin, wash immediately with soap and water, then neutralize with lemon juice or vinegar. If liquid gets into the eyes, flush them with clean water for at least 10 minutes, then seek immediate medical attention. Following this rule will reduce the risk of serious personal injury.
- Store the battery pack where the temperature is below 27°C.
- The battery must be removed from the appliance before it is scrapped by a qualified person.
- The appliance must be disconnected from the supply mains when removing the battery.
- The battery is to be disposed of safely.

Charger Safety Precautions:

- The charger must not be damp, and should never be used in a damp environment.
- The charger is for indoor use only.
- Do not use the product if it has suffered any heavy shock or jolting, or is damaged in any other way.
- Do not conduct charging in a position which may become exposed to sunlight or other heat source. Recommended temperature range at charging vicinity is 10° to 25° C.
- Do not conduct charging operations in the vicinity of flammable materials. Example: Cloth, packaging materials, paint, spray paint or aerosols, lubricant, thinners, petrol containers, gas containers or gas appliances.
- Do not cover any ventilating slots and provide adequate ventilation during operation.
- Never modify, disassemble or attempt to repair the product yourself.
- Do not allow the charger or batteries to become contaminated with any material which could be conductive.
- Remove the plug of the product from the power socket when it is not in use or when cleaning it.
- Protect battery contacts to avoid a short circuit caused by metallic objects which could cause a fire or explosion!
- Do not charge batteries which show signs they have leaked electrolyte. Dispose of them properly.
- Never charge a damaged battery

Let's talk safety



Don'ts

- Do not pull or carry by charger cord, use cord as a handle, close a door on cord, or pull cord around sharp edges or corners. Do not place product on cord. Do not run appliance on cord.
- Don't handle the charger plug or use the vacuum cleaner with wet hands.
- Don't use this vacuum cleaner if it has been dropped, damaged, immersed in water or left outdoors.
- Don't leave the vacuum cleaner in one spot for an extended period of time when the brushbar is activated. This vacuum cleaner is fitted with a rotating brushbar which if left in one place may cause damage to the floor surface.
- Don't attempt to remove blockages with sharp objects as this may cause damage to the vacuum cleaner.
- Don't try to short the terminals of the battery and the charger.
- Don't use the vacuum cleaner with incorrect voltage as this may result in damage or injury to the user. The correct voltage is listed on the rating label.
- Don't vacuum up hot coals, cigarette butts, ash, matches or smoking hot burning items or use in an area where there may be harmful fluids (chlorine, bleach, and ammonia drain cleaner).
- Do not vacuum hard or sharp objects such as glass, nails, screws or coins etc.
- Do not vacuum plaster dust, concrete dust or any other building or vitreous material.
- Do not vacuum flour, baking soda or any other powder-based carpet refresher or deodoriser.



Do's

- Always make sure the filter and dirt container are fitted correctly before using your vacuum cleaner.
 - Always turn off and unplug from charger and remove the battery before carrying out any maintenance.
 - Turn off all controls on the vacuum cleaner before disconnecting or connecting the battery.
 - Take extra care when cleaning on the stairs.
 - Always protect the charger cord from heated surfaces or near open flames.
 - Keep all openings clear and free from debris as this may affect the airflow/suction.
 - Store your vacuum cleaner in a cool, dry area. If filters have been cleaned as per user guide instructions ensure they are thoroughly dry before storing away.
 - Always use the charger supplied with the vacuum cleaner.
 - Use only SAA approved 10amp extension cords. Care should be taken to arrange the extension cord as it can be a trip hazard.
 - Always carry the vacuum cleaner by the handle.
 - Store your vacuum cleaner in a cool, dry area. Store the battery pack in a "charged" condition. Minimum 30-50% charged for best battery life.
- CAUTION:** The battery used in this device may present a risk of fire or chemical burn if mistreated. Do not disassemble, heat or incinerate. Replace battery with Vax battery only. Use of another battery may present a risk of fire or explosion. Dispose of used battery promptly. Keep away from children. Do not disassemble and do not dispose of in fire. Do not attempt to disassemble the battery or remove any component projecting from the battery terminals. The battery and charger have no user serviceable parts. Fire or injury may result. Prior to disposal, protect exposed terminals with heavy insulating tape to prevent shorting.
- WARNING:** For best performance terminals on battery, battery charger and vacuum cleaner must be clean and free from dust and dirt. Do not attempt to recharge non-rechargeable batteries.

Thank you for buying this Vax Cordless Blade.

Taking care of your carpets and hard floors

The Vax Cordless Blade series is designed to make vacuuming carpets and hard floors regularly, as effective and efficient as possible and this user guide will help you get the most out of your machine.

Maintaining your carpets and hard floors will ensure they keep their appearance for longer and Vax will help you take good care of them.

Taking care of your Vax Cordless Blade

Also inside this guide are instructions on maintaining your new machine, so that it's ready when you are to tackle your carpets and hard floors.

Contents



[Let's talk safety](#)



[Getting to know your machine](#)



[Getting started](#)



[Using your machine](#)



[Taking care of your machine](#)



[What to do if it goes wrong](#)



[Getting in touch](#)



[Accessories](#)

Cordless Blade Pet Pro

Included with your machine



Crevice Tool



Dusting Brush



Pet/Stair Tool

We're here if you need us

For troubleshooting simply visit or call:

Australia: 1300 361 505*

New Zealand: 0800 800 900*

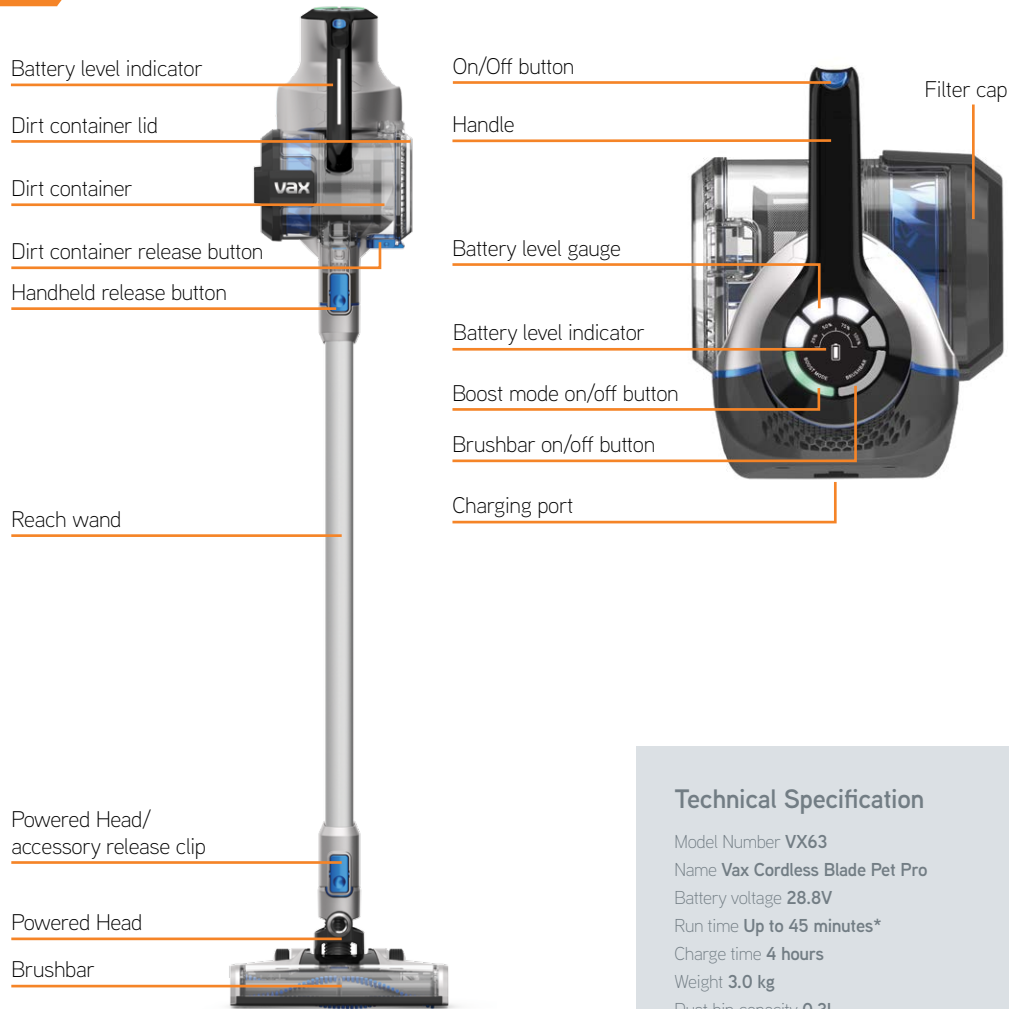
vax.com.au

vax.co.nz

*Monday – Friday: 8:30am -5:00pm

Calls are charged at the standard local rate. Please make note of the serial number and model number of the product before calling.

All models come with a charger, wall mount, 3 screws and user manual.



Technical Specification

Model Number **VX63**
 Name **Vax Cordless Blade Pet Pro**
 Battery voltage **28.8V**
 Run time **Up to 45 minutes***
 Charge time **4 hours**
 Weight **3.0 kg**
 Dust bin capacity **0.3L**

Powerhead Specification

Model no. **FT3V1B1**
 Wattage **48W**
 Voltage **28.8V**
Powerhead to be used ONLY with Vax VX63

Battery Specification

Type **Lithium-ion rechargeable battery pack**
 Battery model no. **32BTBT3V1**
 Voltage **28.8V**
 Rating **2.0Ah 57.6Wh**
Use with E-TEK model ZD24W342060 Charger ONLY

Charger Specification

Charger model no. **ZD24W342060**
 Input **100-240V ~ 50/60Hz 0.8A Max**
 Output **34.2V 600mA**
Use with Li-ion Battery 32BTBT3V1 ONLY

Accessories & Consumables

Filter pack **Model No. VX63F**



Subject to technical change without notice.
 Turn off brushbar on hard floors. Images are illustrative only.

To purchase consumables and accessories, please visit vax.com.au
 *Brushbar and Boost off

PLEASE READ 'LET'S TALK SAFETY' AT THE BEGINNING BEFORE USE

Before you begin

CAUTION: Always switch off the vacuum cleaner before connecting or disconnecting the handheld/attachments or removing and emptying the dirt container.

For best cleaning results, filters require cleaning at least every 3 months and should be replaced every 12 months depending upon use.

Lithium-Ion battery safety features

- Over charge protection
- Short circuit protection
- Deep discharge protection
- Over load protection
- High/low temp protection

Assembling your upright slim vacuum cleaner

CAUTION: This vacuum cleaner is not free standing. In between uses or when carrying out any maintenance always lie flat on the floor in a suitable location so it does not become a trip hazard or can be stepped on.



Line up the connector on the reach wand with the Powered Head. Push the reach wand down onto the Powered Head until it clicks into place.

Push the handheld down onto the reach wand until it clicks into place.

The vacuum is not free standing and in between uses must always be placed in the wall bracket, or laid flat on the floor in a suitable location, so it does not become a trip hazard or can be stepped on.

Fixing the wall bracket



Fully assemble the vacuum.



Slot the wall bracket through the groove and lift upwards into position.



Choose a position where you would like to keep the vacuum stored, preferably near a power point. With the wall bracket attached, stand the vacuum close to the wall, in the upright position with the Powered Head flat on the floor.



Holding the wall bracket firmly in place, carefully lift and remove the vacuum away from the wall bracket.



Using a pencil make a small mark for each screw.



Use both screws and wall plugs to secure the wall bracket to the wall. Place covers over the screws.



Firmly press the vacuum handle into the wall bracket to secure.

PLEASE READ 'LET'S TALK SAFETY' BEFORE USE

CAUTION: The battery used in this device may present a risk of fire or chemical burn if mistreated. Do not disassemble or heat above manufacturer's maximum temperature limit (60°C/140°F) or incinerate. Use of another battery may present a risk of fire or explosion. Dispose of used battery promptly. Keep away from children. Do not disassemble and do not dispose of in a fire. Do not attempt to disassemble the battery or remove any component projecting from the battery terminals. The battery and charger have no user serviceable parts. Fire or injury may result. Prior to disposal, protect exposed terminals with heavy insulating tape to prevent shorting. The battery is to be disposed of safely at your local battery recycling centre.

Do not attempt to recharge non-rechargeable batteries. The battery must be removed from the appliance before it is scrapped. The appliance must be disconnected from the charger/supply mains before use and when removing or installing the battery into the machine. In case of battery leakages avoid any contact with the skin. Contact our Customer Care Line on: AU 1300 361 505 / NZ 0800 800 900.

Charging the vacuum cleaner

NOTE: The initial charge is 4 hours, charging will be required before first use. The vacuum can be charged with the handheld either attached to, or detached from, the reach wand.



To charge the machine, detach the reach wand and place the handheld on its base. You can also charge the machine whilst attached to the wall mount.



Insert the charging lead into the charging port located on the base of the handle.



Plug the charging plug into a power point.

Getting started

Charging the battery

WARNING: Do not use the vacuum cleaner when the machine is plugged in and charging.

NOTE: Once the battery is fully depleted the vacuum will still turn on for a few seconds. Plug in the charger until fully charged. The machine can remain on the battery charger once fully charged. The life expectancy of the battery will vary depending on the usage of the vacuum cleaner.



White light flashing – The battery is charging.
White light – The battery is charged (after 4 hours).
Red light – The battery is low.

If charging for the first time the initial charge time is 4 hours.

Using your machine

CAUTION: For use on delicate hard floors, the brushbar must be turned off to enable slow suction. To prevent any damage being sustained test on an inconspicuous area of the flooring.

Using as a stick vacuum cleaner



Place your foot on the Powered Head and pull the handle backwards to recline.



To turn the machine on, press the on/off button located on the handle.



To activate and deactivate the brushbar, press the brushbar on/off button located on the dial. The machine will always start with the brushbar turned off.



For additional cleaning time, deactivate the boost mode located on the dial. The machine will always turn on in boost mode.

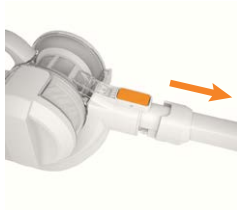


When the vacuum cleaner is in use the charging lights will indicate how much charge is remaining. When the first bar starts to flash red this indicates the battery is running low (<25%).

Using your machine

Using as a handheld vacuum cleaner

CAUTION: Always take extra care when using the vacuum cleaner on the stairs.



Press the handheld release clip. Pull to separate the handheld from the reach wand.



The reach wand, when attached to the Powered Head/accessory, is not free standing. Place safely and securely to one side.



Choose an accessory.



Push the chosen accessory into the handheld until it clicks into place.



To turn the machine on. Press the on/off button located on the handle.

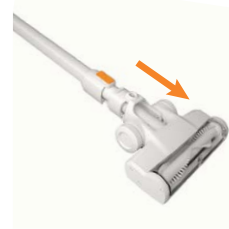


All of the accessories including the Powered Head can be attached directly onto the handheld.

Using your machine

Using as a reach stick vacuum cleaner

The reach wand can be used for hard to reach places.



Press the Powered Head/accessory release clip and pull to remove the Powered Head from the reach wand.



Choose an accessory.



Push the chosen accessory into the reach wand until it clicks into place.



To turn the machine on, press the on/off button located on the handle.



The reach wand can be used for hard to reach places and at different heights for above floor cleaning.



The vacuum is not free standing and in between uses must always be placed in the wall bracket, or laid flat on the floor in a suitable location, so it does not become a trip hazard or can be stepped on.

Taking care of your machine

Emptying and cleaning the dirt container

WARNING: Don't over fill the dirt container to avoid blocking the air flow through the vacuum cleaner.



Press the handheld release clip. Pull to separate the handheld from the reach wand.



The reach wand when attached to the Powered Head/accessory is not free standing. Place safely and securely to one side.



Hold the handheld over a bin, press the dirt release button to allow dirt/debris to fall out.



Cleaning the filter and separator

CAUTION: Always empty the dirt container before cleaning the separator and filter. Remove the reach wand/accessories from the handheld. Incorrect fitting of the separator and filter will reduce suction. Always switch off the vacuum cleaner before carrying out any maintenance or troubleshooting. Do not use your vacuum cleaner without the filters in place.



To access the filter and separator twist the cap anti-clockwise and pull out.
To put the cap back on, push the cap into the unlock position ensuring it is fitted correctly and twist clockwise to lock.

Taking care of your machine



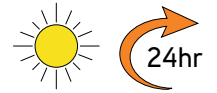
Remove the filter from the lid.



Tap the filter, foam and separator over a bin to remove any dirt and debris. Do not wash the separator.



Wash the foam and filter under running water (max 40°C).



Leave for 24hrs or until fully dry before replacing.

Reassemble filter and separator

1 - SEPARATOR



2 - FOAM



Step 1: place foam (2) into separator (1).

3 - FILTER



4 - LID



Step 2: place filter (3) into lid (4) with the pull tab facing up.



Step 3: attach back onto machine

For best cleaning results, filters require cleaning every 3 months or as needed.



IMPORTANT: If the brushbar has been obstructed, the Motor Protection Sensor may have been activated and the brushbar will seize. Remove the Powered Head from the machine and clear any obstruction. Refit the Powered Head, switch on the vacuum cleaner by pressing the trigger and press the brushbar on/off button.

Removing blockages from the Powered Head and reach wand



Using scissors, remove any threads or hair from around the brushbar and clear any dirt or debris from Powered Head.

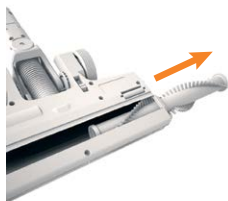


To test for a blockage in the reach wand, drop a small ball of paper into the wand. The paper will drop through if the wand is clear. Use a broom handle or similar blunt object to remove any blockage.

Removing and replacing the brushbar and belt



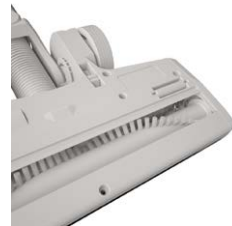
On the base of the floorhead, find letter A engraved to indicate the side of the brushbar cap. Using a screwdriver, unscrew the three screws to remove the brushbar cap.



Once the cap is removed, slide the brushbar out.



Clear any threads or hair from around the brushbar and any dirt/debris inside the housing of the Powered Head.



When re-fitting the brushbar, slide it back into place ensuring the brushbar end cap fits into position. Realign the cap and screw securely back on.



On the base of the floorhead, find letter B engraved to indicate the side of the belt cap. Using a screwdriver, unscrew the three screws to remove the belt cap.

Also available Vax Cordless Blade Accessories

Order at: www.vax.com.au

Refer to 'using your machine' section for tool assembly instructions.

Vax Cordless Blade Accessories

Filter Pack
VX63F



Problem

Solution

There is an accessory missing

- Check the contents panel on the box to make sure the part is included with your vacuum cleaner.

Why does my vacuum cleaner have no power?

- The battery may not be charged. Go to 'Getting Started'.
- The motor thermostat may have tripped. If this has happened, switch off the vacuum cleaner. Remove and empty the dirt container and check for blockages. Clean the filters and allow the vacuum cleaner to cool for approximately 1 hour (if you have washed the filters you will need to wait 24 hours for the filters to fully dry before putting them back into the vacuum cleaner).

Why isn't the light on the vacuum cleaner lit when the battery is charging?

- Check the battery charger is plugged in. Go to 'Getting started'.

Why won't the vacuum cleaner pick up?

- The dirt container may not be correctly fitted, remove the dirt container from the vacuum cleaner and check it's assembled correctly, refit ensuring it's locked into place.
- The separator is not correctly fitted. Go to 'Taking care of your machine'.
- The filters may be clogged, clean the filters. Go to 'Taking care of your machine'.
- The dirt container may be blocked, empty the dirt container. Go to 'Taking care of your machine'.
- The brush on the Powered Head has not been activated. Go to 'Using your machine'.
- There may be a blockage in the reach wand. Disconnect from the vacuum cleaner and carefully remove any blockages. Go to 'Let's talk technical'.
- Brushbar may be blocked, this will activate the brushbar motor thermostat.

Why won't the brushbar turn?

- The brushbar has not been activated. Go to 'using your machine'.
- The Powered Head/brushbar may be obstructed. Go to 'Let's talk technical'.

Why is dust escaping from the vacuum?

- The filters may be clogged, clean the filters. Go to 'Taking care of your machine'.
- The separator may be clogged, clean the separator. Go to 'Taking care of your machine'.
- The separator may be misassembled or not locked in correctly.



* Calls are charged at the standard local rate. Please make a note of the serial number and model number of the vacuum cleaner before calling.



Notes

Notes 

vax

Distributed by Techtronic Industries Australia Pty. Ltd.
31 Gilby Road, Mt Waverley, VIC 3149 Australia.
Careline AU: 1300 361 505 www.vax.com.au
Careline NZ: 0800 800 900 www.vax.co.nz